

STAR HOMES

Promoters & Developers

9444044914 / 9566168717



SPECIFICATION AND AMENITIES

R.C.C Frames Structures and Brick wall as per Structural Consultant with CCP

Main door Frame teak wood with paneled shutters, Bedroom doors designed flush doors with country wood frames.

UPVC windows

Flooring 2' x 2' vitrified tiles for all rooms for bathrooms upto 7'0' ht glazed tiles, flooring with matt finished tiles of size: 12" x 12"

Full Putty walls and ceiling with Emulsion painting

Kitchen top black granite with SS sink tiles upto 7 feet level

EWC for both toilets with necessary tap points, shower point & wash basins

3 Phase concealed wiring with modular switches and inverter provision for all flats.

FLATS AREA CALCULATION				BLOCK - A	
BLOCK	FLAT	Plinth Area	C.Area @ 20%	Salable Area	UDS
First Floor		Floor Area			
	F1	671	134	805	399
	F2	446	89	535	265
	F3	658	132	790	392
Second Floor		Floor Area			
	S1	671	134	805	399
	S2	446	89	535	265
	S3	658	132	790	392
	Total	3550	710	4260	2112
	Land	2112			

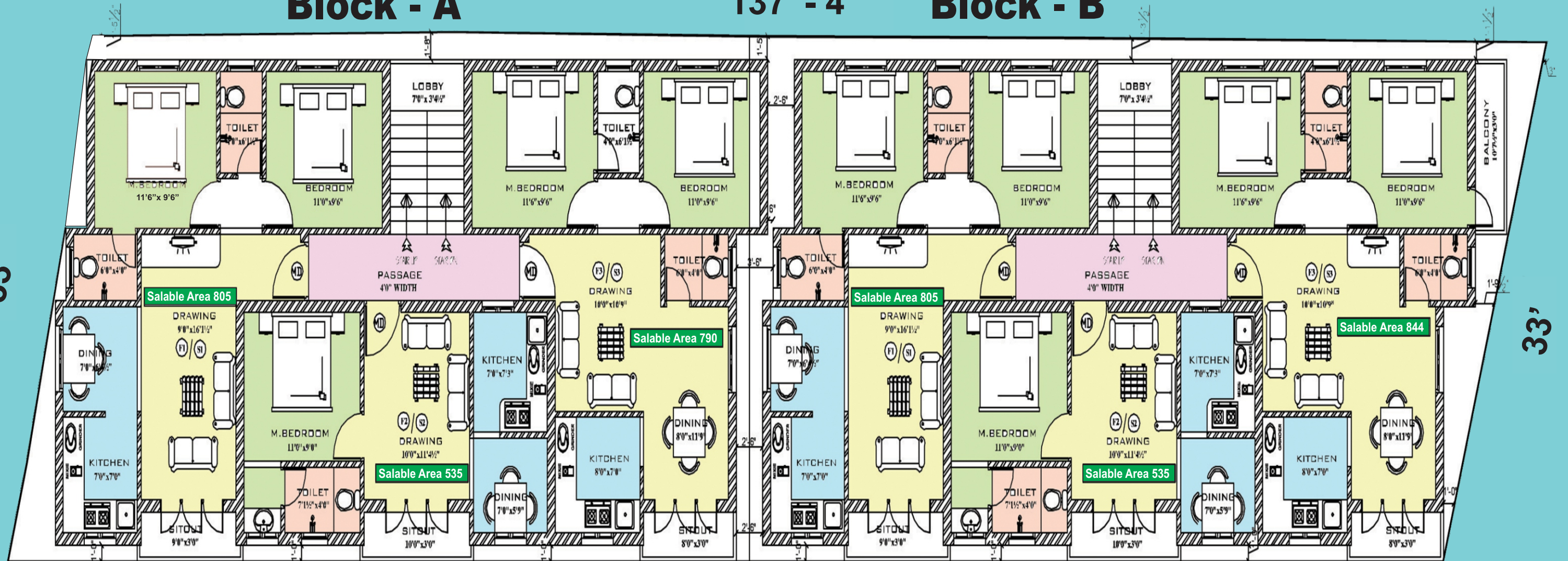
FLATS AREA CALCULATION				BLOCK - B	
BLOCK	FLAT	Plinth Area	C.Area @ 20%	Salable Area	UDS
First Floor		Floor Area			
	F1	671	134	805	414
	F2	446	89	535	275
	F3	703	141	844	434
Second Floor		Floor Area			
	S1	671	134	805	414
	S2	446	89	535	275
	S3	703	141	844	434
	Total	3640	728	4368	2244
	Land	2244			

Block - A

137' - 4"

Block - B

33'

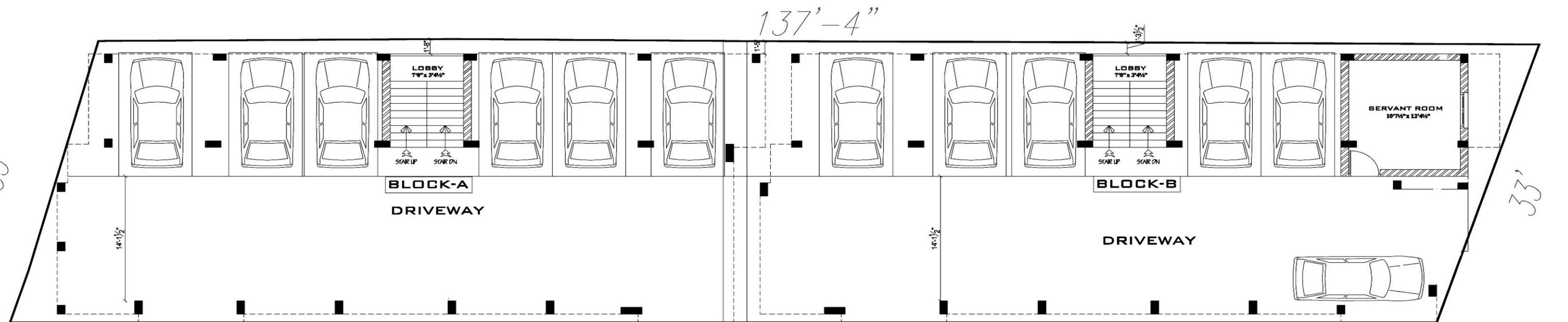


33'

136'

Typical 1st & 2nd Floor Plan

33'



33'

136'

GROUND FLOOR PLAN